



# CP60

---

## Instructions

---

Please read the instructions carefully, and keep it well.

---

## **This instruction is for CP60**

There is difference between picture and products, because of the upgrading of products.  
Please refer to the actual products

# 1 CONTENT

<b>1</b>	<b>Content</b>	<b>50</b>
<b>2</b>	<b>Introduction</b>	<b>52</b>
2.1	Welcome	52
2.2	About these instructions	52
2.3	Description	52
2.4	Distributor information	52
<b>3</b>	<b>Safety</b>	<b>53</b>
3.1	Purpose	53
3.2	Safety Instructions	53
	3.2.1 Potential hazards for the consumer	53
	3.2.2 Safety information	55
	3.2.3 Safety regulations	56
<b>4</b>	<b>Product description</b>	<b>58</b>
4.1	Product	58
4.2	Technical data	59
	4.2.1 Capacity	59
	4.2.2 Technical sheet	59
<b>5</b>	<b>Installation and Testing</b>	<b>60</b>
5.1	Prerequisites	60
	5.1.1 Installation Site	60
	5.1.2 Site condition	60
	5.1.3 Electronic condition	61
	5.1.4 Water condition	62
	5.1.5 Requirements for milk beverages	62

# 1 CONTENT

5.2	Installation	63
	5.2.1 Coffee machine	63
	5.2.2 Coffee bean container, instant container installation	63
5.3	Connection	64
	5.3.1 Installation fixed water connection	64
	5.3.2 Drain water installation	65
5.4	Power	66
	5.4.1 Coffee machine power	66
<b>6</b>	<b>Initial working</b>	<b>67</b>
6.1	Filling	67
	6.1.1 Filling the bean container	67
	6.1.2 Filling the instant container	67
	6.1.3 Filling of the internal water tank	68
	6.1.4 Milk hose connection	68
6.2	Switching on the machine	69
6.3	Standard setting	69
6.4	Switching off the machine	71
<b>7</b>	<b>Beverage preparation</b>	<b>73</b>
7.1	Coffee beverage specialties	73
7.2	Milk specialties	74
7.3	Instant specialties	75
<b>8</b>	<b>Rinse and maintenance</b>	<b>76</b>
8.1	Cleaning schedule	76
8.2	Daily cleaning	77
	8.2.1 Quick rinse of the brewing system	77
	8.2.2 Quick rinse milk frother	78
	8.2.3 Flushing the Instant spout	79

---

# 1 CONTENT

8.2.4	Cleaning the beverage outlet	80
8.2.5	Cleaning the mixing bowl	81
8.2.6	Disassembling and cleaning the milk hose line	82
8.3	Maintenance	83
8.3.1	Cleaning the brewer system	83
8.3.1.1	Steps for removing the brewer	83
8.3.1.2	Assembly of the brewing system	84
8.3.1.3	Cleaning the brewer	85
8.3.2	Thorough cleaning of the brewer	87
8.3.3	Thorough milk cleaning	88
8.3.4	Descaling	88
8.3.5	One-button maintenance	89
<b>9</b>	<b>Responsibility and warranty</b>	<b>90</b>
9.1	User's responsibility	90
9.2	Warranty and compensation	90
<b>10</b>	<b>Attention</b>	<b>91</b>
10.1	Daily using and maintenance attention	91

## 2 INTRODUCTION

### 2.1 Welcome

- This model is the latest fully-automatic coffee machine which is also core patented.
- This instruction manual introduces how to use and clean this machine. We are not responsible for any damages, in the case that the instructions have not been followed. If you need to know more details, please contact our customer service department.
- This instruction shows how to use and clean this machine. Please use the machine under instructions and keep the instructions for further reading.

### 2.2 About these instructions

- These instructions are included with the equipment. Always keep these instructions in legible condition at the place of use of the product.
- Modifications to these instructions due to technical advancements are reserved. Reprints, translations and reproductions in any form, including excerpts, require written approval from the publisher.
  - This instruction is for the CP60.

### 2.3 Description

- This fully automatic coffee machine is used to make beverage specialties. To make sure it meets the demand of large quantity daily cups, the machine is used for the restaurant, office and other commercial sites.
- The following products can be dispensed depending on the machine equipment:
  - Coffee, milk coffee, powder drinks and milky products.
- The housing consists of aluminum and high quality plastic. The design of this machine and all accessories permits the following operator requirements to be observed:
  - HACCP hygiene regulations.
  - Accident prevention regulations for electrical safety in the commercial area.
- The machine has a touch screen for operation.

### 2.4 Distributor information

coffee perfect GmbH  
Address: Netter Platz 1  
Post code: 49090 Osnabrück | Germany  
Phone: +49 (0)541 76013-0  
Web: [www.coffee-perfect.de](http://www.coffee-perfect.de)

---

## 3 SAFETY

### 3 Safety

- Safety is one of our most important features. To make sure that the safety of device remains useful, you must follow up with the instructions.

#### 3.1 Purpose

- This machine and all accessories are intended for the following operating modes:
  - Usage of the personnel authorized by the distributor.
  - Supervised self-service operation (self-service).
  - With fixed water connection.
  - Pressure-free operation via fixed water and/or with internal water tank.
  - Permanent installation within dry, enclosed rooms.
- This machine and all accessories are not intended for the following operating modes:
  - Areas with high percentage of humidity (highly steamed areas) or outdoors.
  - On board of vehicles or in mobile applications (please check with the distributor).

#### 3.2 Safety Instructions

##### 3.2.1 Potential hazards for the consumer

- **Caution:** There is a risk of injury if the instructions are not followed exactly.
- Please observe the following points:
  - Please read the instructions carefully before using the machine.
  - Do not operate it if the machine is not running normally or damaged. Changing the safety device is not permitted.
  - Touching the high temperature components is not permitted.
  - This equipment can be used by children of 8 years and above, and by persons with reduced physical, sensory or mental abilities or of a lesser level of experience and knowledge when they are supervised or have been trained in the safe use of the equipment.
- Please take care of the children, avoid children playing with the machine, not to be cleaned and maintained by children.
- Machine is installed at an obvious site.

## 3 SAFETY

- **Caution:** Incorrect use of the electrical equipment may result in electric shock
- Please read the following points:
  - There is danger to life when touching energized parts.
  - The machine must be connected with fuse-protected circuit (to protect against leakage).
  - Observe the corresponding low voltage and local and regional safety regulations.
  - The connection must comply with the regulations to prevent damage to the electrical system.
  - The supply voltage must correspond to the specifications on the nameplate.
  - Do not touch any electrically conductive parts. Turn off the device during maintenance and disconnect it from the power supply.
  - Cable replacement only permitted to the personnel authorized by the distributor.
- **Caution:** Turn off power before service.
- **Caution:** If you replace the cables with cables not provided by coffee perfect, there is a risk of fire and electric shock.
- **Caution:** Beverage additives and residues can cause allergies
- **Caution against burns:** There is risk of getting burned with the beverages, keep hands far away from the steam outlet.
- **Caution against burns:** High temperature on the outlet and brewing system. Only touch the handle. Only rinse the brewing system after cooling.
- **Caution against burns:** There is a risk of injuries by touching any of the active parts. Don't put your hand into beans container, Instant container and brewing system when machine is in use.

### 3.2.2 Safety information

- **Caution:** The device can cause contamination and damage if not installed properly.
- Please observe the following points:
  - If hygiene requires that the water hardness is less than 5 °dKH, please install a water filter, otherwise the appliance will be damaged.
  - If the machine is damaged, turn off the water supply (machine with fixed water connection) and switch off the machine or disconnect the plug. Observe the corresponding low voltage and local and regional safety regulations.
  - Make sure the water supply is correct, if not, the pump is at damaged risk. The check valve must be installed in the hose in case of damage and water leakage.
  - If the machine has not been used for more than one week, cleaning must be carried out before the next operation.
  - Prevent coffee machines from being affected by bad weather.
  - Removing fault by experts approved by the distributor.
  - Please contact our technical support department to do the replacement or maintenance.
  - Cleaning the machine with water or steam is not permitted.
  - Bean container is only for beans, Instant container is only for professional Instant, the inlet of the cleaning tablet is only for cleaning tablet.
  - Frozen coffee beans is not permitted, otherwise the brewing system will stick together.
  - If during the transport is under -10°C, there could be a risk of short circuit and damage to machine & spare parts.
  - Please use the original accessories with our coffee machine.
  - Only use new hoses to connect the device.

## 3 SAFETY

### 3.2.3 Safety regulations

#### **Water:**

- **Caution:** A wrong treatment of the water is harmful to health!
- Please observe the following points:
  - Only use clean water.
  - Corrosive water is not allowed to be poured in the machine.
  - Minimum carbonate hardness between 5 °dKH or 8.9 °fKH. PH should be between 6.5 – 7.
  - Total hardness must always be higher than the carbonate hardness. Minimum carbonate hardness between 5 °dKH or 8.9 °fKH. Chlorine content should be less than 100mg/L.
  - PH should be between 6.5 – 7.
- Use the machine with the water tank
  - Fill the water tank with clean water every day.
  - Clean the water tank before filling.

#### **Coffee:**

- **Caution:** It could be harmful to health with incorrect operation of coffee!
- Please observe the following points:
  - Check the package.
  - The filling capacity is no more than the daily usage.
  - Close the beans container instantly.
  - Keep the beans in dry, cold and enclosed room.
  - Use fresh beans.
  - Use the beans during the shelf-life.
  - Seal package after opening it, to prevent it from contamination.

**Fresh Milk:**

- **Caution:** It could be harmful to health with incorrect operation of milk!
- Please observe the following points:
  - Do not use raw milk.
  - Only use pasteurized and heat treated milk.
  - Only use homogenized milk.
  - Please use the cold milk with temperature around 4-10 °C.
  - Wear gloves when handling milk.
  - Only use milk from original packaging.
  - Filling milk back into original package is not permitted. Clean the milk container before filling.
  - Check the packaging.
  - The filling capacity of milk is no more than the daily usage.
  - Close the lid of the milk container and cooler after filling.
  - Keep the milk in dry, cold and enclosed room. (Highest temperature 7 °C)
  - Use fresh milk during the shelf-life.
  - Seal package after opening it, to prevent it from pollution.

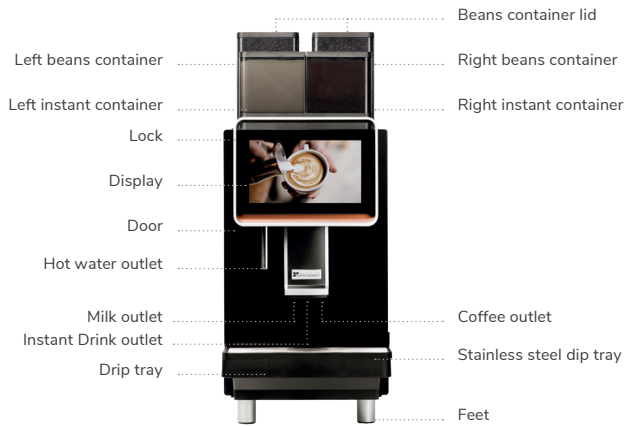
**Instant:**

- **Caution:** It could be harmful to the health with incorrect operation of Instant!
- Please observe the following points:
  - Make sure that only fast-dissolving powders are used for the machines.
  - Check the packaging.
  - The filling capacity of Instant is no more than the daily usage.
  - Close the Instant container after filling.
  - Keep the Instant in dry, cold and enclosed room.
  - Use the fresh powder.
  - Use the Instants during the shelf-life.
  - Sealed package after opening it, to prevent it from contamination.

## 4 PRODUCT DESCRIPTION

### 4.1 Product

#### Front



#### Back



## 4.2 Technical data

### 4.2.1 Capacity (Hourly output on DIN18873-2)

Advised daily output	300 Cups	
Hourly output	Single	Double
Espresso	156	210
Americano	120	150
Cappuccino	105	/
Hourly hot water output	30L	
Water tank capacity	4L	
Beans container capacity	Approx. 2 * 1200 g	
Power container capacity	Milk Instant 600g/Choco Instant1000g	
Grounds container capacity	Approx. 100 Pcs(Base on 10g/portion)	

### 4.2.2 Technical sheet

Coffee machine	220-240V- 50/60Hz 2500-2900W
Connection tube set	G3/4"change into G3/8"length1.5M metal tube
Connection water pressure	80-600kPa (0.8-6bar)
Coffee machine W*D*H	340 * 540 * 830 mm
Coffee machine N.W	45 kg
Grounds container capacity	Approx. 100 Pcs (base on 10g/portion)

## 5 INSTALLATION AND TESTING

The following steps must be operated to the personnel authorized by the distributor.

### 5.1 Prerequisites

#### 5.1.1 Installation Site

- Please observe the following points, otherwise machine could become damaged:
  - The installation must be on a stable and level surface, otherwise vibration will occur.
  - Provide sufficient space for filling the product containers.
  - Installation site should be revised by the personnel authorized by the distributor at all times.
  - Distance between power connection and machine should be less than 1m.
- Keep enough space for maintenance and operation:
  - Keep enough space for coffee beans.
  - Back of machine should be kept at least 5CM from the wall. (Air circulation).
  - Observe local cooking regulations.

#### 5.1.2 Site conditions

- Please observe the following points, otherwise machine could become damaged:
  - Temperature should be ranged between +10 °C- +40 °C (50 °F-104 °F).
  - Maximum permitted air humidity is 80 % rF.
  - Using outside is not permitted, otherwise it could be damaged by bad weather. (Raining, snowing, frost)
- Low temperature store condition:
  - If the room temperature is less than 0 °C please drain the water while the coffee machine is used, stored or shipped.

### 5.1.3 Electronic connection

- Electronic connection must follow up local regulations. The supply voltage must match the details of the nameplate.

#### **Caution: Danger! Electricity!**

- Please must observe the following points:
  - The voltage must match the details on the nameplate!
  - All the phase conductors of the device must be insulated by an electrical wire netting.
  - Electrical connection should be according to IEC 364 (DIN VDE 0100). For safety, device should be connected with a 30 mA ground fault circuit breaker. (Type B ground fault circuit breaker can make sure it response to the error when it with DC fault.)
  - The machine cannot be operated with a damaged cable. Cable and plug replacement only permitted to be carried out by customer services or by experts approved by the distributor.
  - Do not use an extension cord! Please observe the distributor instructions and local regulations, in case of using an extension cord (Minimum intersecting surface: 1.5 mm<sup>2</sup>).
  - When laying out the cable, make sure that people cannot trip over it. Do not allow the cable to pass through sharp corners or hang in the air. Do not clamp the cable. In addition, the cables must not be placed over high-temperature items and must be protected from oil and corrosive cleaners.
  - Do not reach over the cable when touching the device. For connection via a main plug, the socket must be easily accessible during operation so that the plug can be disconnected in case of a fault. Don't plug a wet plug into socket.

## 5 INSTALLATION AND TESTING

### 5.1.4 Water condition

- Inferior raw material and water may cause machine damage. Please observe the following points:
  - Water must be clean and the Chlorine content should be less than 100mg/L.
  - Do not add corrosive water into coffee machine.
  - Carbonate hardness must be less than 5 – 6°dKH (German carbonate hardness) or 8.9 – 10.7 °fKH (French carbonate hardness), and total hardness must be always higher than the carbonate hardness.
  - Minimum carbonate hardness between 5°dKH or 8.9°fKH. The PH should be between 6.5 – 7.
  - Only use new hoses! The installation of old or used hoses is not permitted.
  - Water connection under the instructions and the local regulations. When the machine is connected with a new hose, make sure the hose is clean.
  - The machine must be connected into the hose with a shut-off tap. Install the machine on the water tap pressure reducer through pressure hose and screw connection G 3/8'. (Adjust it to 0.3 MPa (3 bar)).

### 5.1.5 Requirements for milk beverages

- The temperature of milk should be around 4 - 10 °C
- The height of the milk tank or milk module must not exceed 26 mm.
- coffee perfect milk module is suggested to supply with coffee machine.

## 5.2 Installation

### 5.2.1 Coffee machine

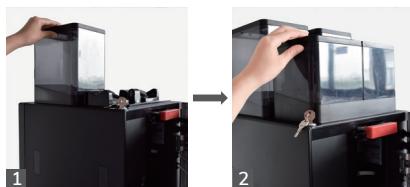
- Open the carton box, take out machine and spare parts. The machine and all accessory units are only permitted to be installed and stored in frost-free locations.

### 5.2.2 Coffee bean container, Instant container installation

Step 1: Open the door using the key, pull out the handle until it stops.



Step 2: Install the coffee bean container in place as shown as on below picture and install the Instant container in place



## 5 INSTALLATION AND TESTING

**Step 3:** Push the handle until it stops, close the door, and then turn off using the key.

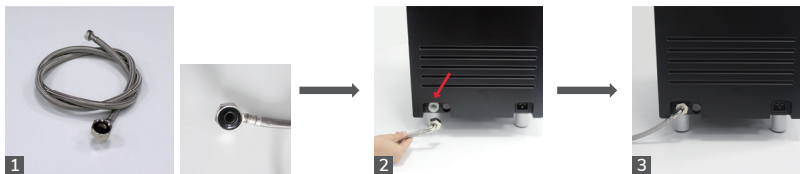


Coffee bean container and Instant container installation completed.

### 5.3 CONNECTION

#### 5.3.1 Installation fixed water connection

**Step 1:** Connect the bigger side with machine.



**Step 2:** Connect the other side with tap water connection.



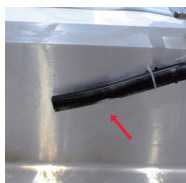
Water inlet tube installation completed.

### 5.3.2 Drain water installation

**Step 1:** Insert the drain pipe into the joint of the metal hose clamp into the drain water port at the back of the coffee machine, and then use a flat-blade screwdriver to lock the metal hose clamp.



**Step 2:** Place the drain water hose into the drain water container (or drain water tank).



**Drain water hose installation completed.**

## 5 INSTALLATION AND TESTING

### 5.4 Power

- The supply voltage must match the details on the nameplate.
- For connection via main plug, the socket must be easily accessible during operation so that the plug can be disconnected in case of a fault.
- Due to the high load, a single socket is required for the machine and for each accessory unit.

#### 5.4.1 Coffee machine power

Step 1: Plug the terminal female of cable into socket.



Step 2: Plug the terminal male of cable into socket.



Installation of the cooling unit on the coffee machine completed.

## 6 INITIAL WORKING

The following steps must be operated to the personnel authorized by the distributor.

### 6.1 Filling

#### 6.1.1 Filling the bean container

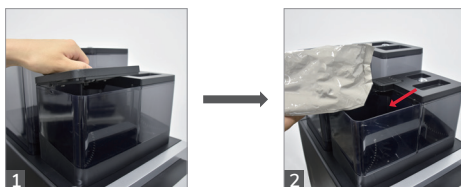
- Open the lid, fill the beans into container, then close using the lid.



Bean container filling completed.

#### 6.1.2 Filling the Instant container

- Open the lid of instant container, fill the instant into container, then close using the lid.

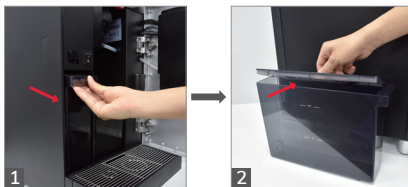


Instant container filling completed.

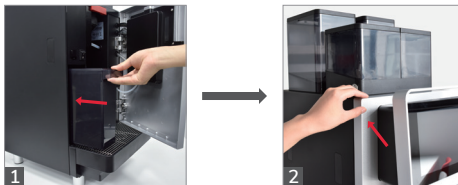
## 6 INITIAL WORKING

### 6.1.3 Filling of the internal water tank

**Step 1:** Open the left appliance door, take out the water tank, remove the lid and fill in purified water.



**Step 2:** Place the lid on the water tank, insert the water tank into the appliance and close the door.



Water tank filling completed.

### 6.1.4 Milk hose connection

- Connect the blue milk hose through the hole of the milk module and then fill it with milk.



The milk hose connection is closed.

## 6.2 Switching on the machine

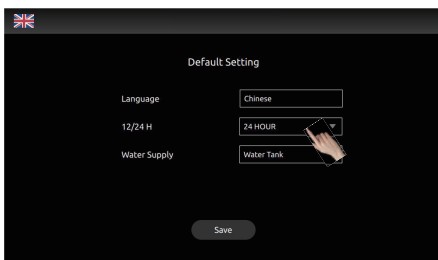
- Turn the key counterclockwise, open the door, press the power button, then close the door and turn the key clockwise.



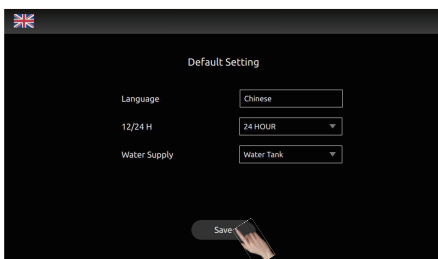
Switch on the coffee machine.

## 6.3 Standard setting

Step 1: Press the service menu, enter the appropriate initial values.

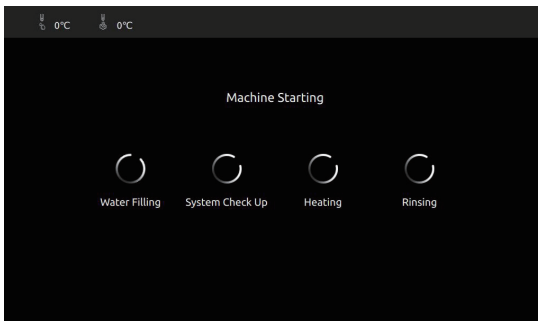


Step 2: Press „Save“, then next step.

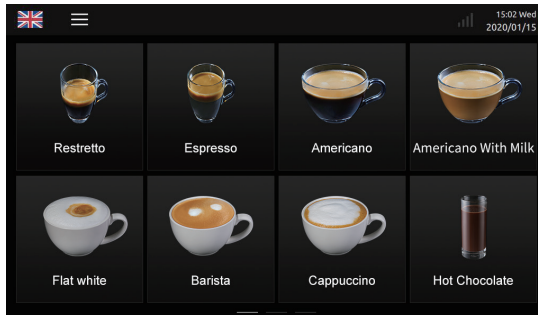


## 6 INITIAL WORKING

### Step 3: Device start...



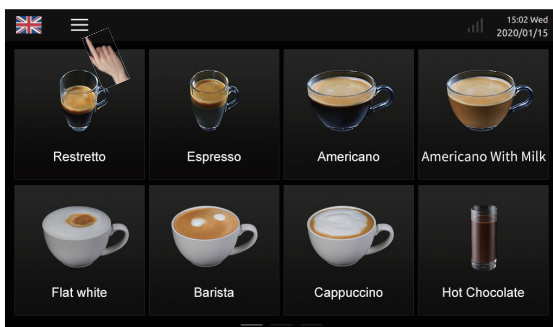
### Step 4: The machine is switched on and ready to prepare beverages.



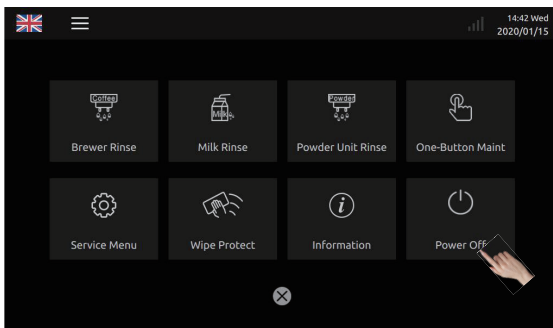
The default setting is complete.

## 6.4 Switch off coffee machine

**Step 1:** Press the icon and the shortcut at the top of the screen, then press the menu.

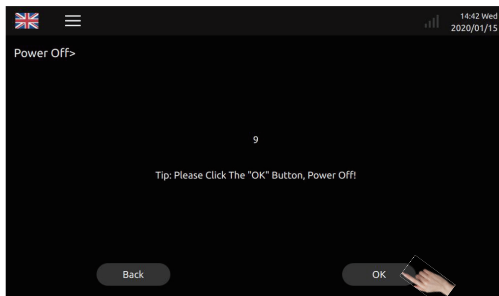


**Step 2:** Press „Power off“.

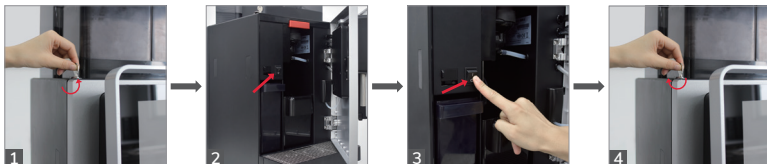


## 6 INITIAL WORKING

**Step 3:** The screen pop-up window prompts you. You want it „off“, press „Yes“, the machine will switch to the off mode, press „No“ to cancel this process. The screen is off but the light is still on (press the screen for more than 3 seconds to shut down the machine).



**Step 4:** In Power Off Mode, open the door with the key, press the power button and then lock the door.



**Switch off the coffee machine.**

## 7 BEVERAGE PREPARATION

The following steps can be performed by end users.

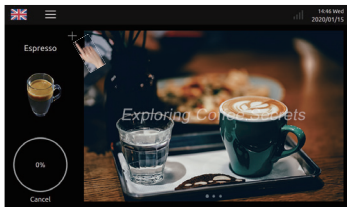
### 7.1 Coffee beverage specialties

- For example: Make a cup of „espresso“.

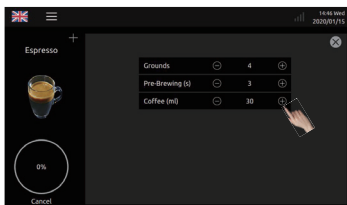
**Step 1:** Press „Espresso“ and then press Espresso in process.



**Step 2:** Beverage in process ..., press the „+“ on the screen, then you would have an interface for beverage setting.



**Step 3:** Adjust the beverage by pressing the „-“ or „+“ on the right side of the menu. (Only work in adjustable mode)



Drink preparation completed.

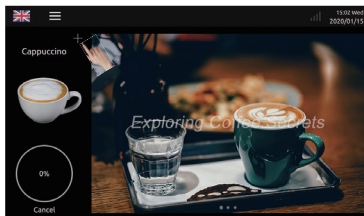
## 7 BEVERAGE PREPARATION

### 7.2 Milk specialties

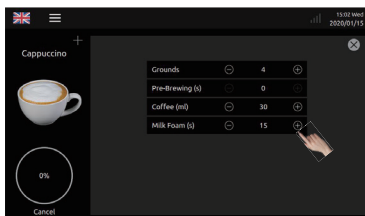
- For example: a cup of „cappuccino”  
**Step 1:** Press „Cappuccino” and then press cappuccino in process.



**Step 2:** Beverage in progress..., press the „+” on the screen to go to the beverage setting.



**Step 3:** Adjust the beverage by pressing the „-” or „+” on the right side of the menu. (Only work in adjustable mode)

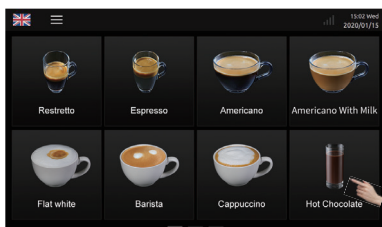


Cappuccino is ready.

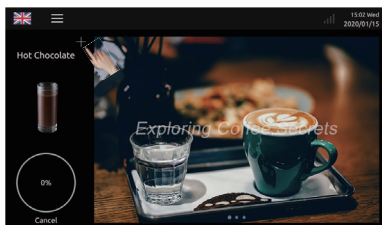
## 7.3 Instant specialties

- For example: a cup of „Hot cocoa”

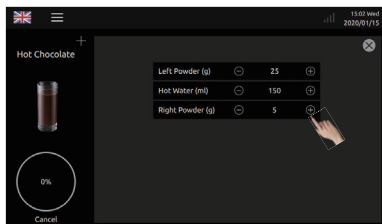
**Step 1 :** Press „Hot cocoa” and then press Drink in preparation.



**Step 2 :** Beverage in progress ..., press the „+” on the screen to go to the beverage setting.



**Step 3:** Set the beverage by pressing the „-” or „+” on the right side of the menu. (Only work in adjustable mode)



Hot cocoa is ready.

## 8 RINSE AND MAINTENANCE

### 8.1 Cleaning schedule

Professional coffee machine cleaning schedule						
	Daily	Weekly	Demand	Required	Mandatory	
Automatic rinse & clean	✓					Brewer rinse
	✓					Milk rinse
	✓			✓	✓	Brewer system deep clean
	✓			✓	✓	Milk system deep clean
	✓					Powder units rinse
Manual clean	✓		✓	✓		Refrigerator & milk pipe
		✓				Coffee bean hopper
		✓	✓			Powder hopper
	✓		✓	✓	✓	Powder unit clean
	✓		✓			Grounds container
	✓		✓			Drip tray, stainless steel tray
	✓		✓	✓		Integrated beverage group
	✓		✓			Water tank
				✓	✓	Descaling
			✓			Filter of water inlet assembly
	Interpretation					
Daily	Clean at least once per day, possibly more often if needed					
Weekly	Clean at least once per week, possibly more often if needed					
Demand	Clean if required or dirty if required					
Required	When the machine shows prompts for cleaning					
Mandatory	After the machine jumps out of the prompt, it must be cleaned strictly accordance with the requirements to avoid irreversible machine damage.					
Dealer on-site maintenance	Every six months or 60,000 cups of dealers on-site maintenance.					

## 8.2 Daily cleaning

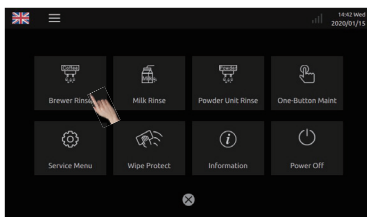
- Daily cleaning must be carried out regularly.

### 8. 2. 1 Quick rinse of the brewing system

Step 1: : Press the shortcut icon at the top of the screen, then press the menu.



Step 2: Click on „Rinsing the brewing system“ in the menu below the screen, then next step.



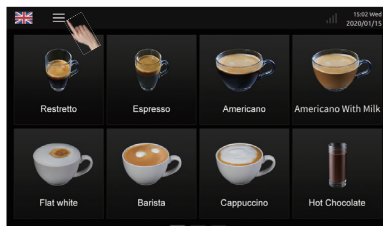
Step 3: Follow the instructions on the screen to perform the quick rinse of the brewer.



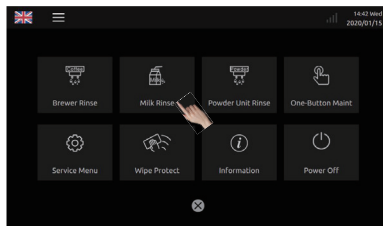
## 8 RINSE

### 8.2.2 Quick rinse milk frother

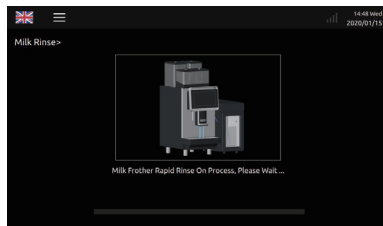
Step 1: Click the shortcut icon at the top of the screen and then click the menu.



Step 2: Click on „Milk Rinse“ in the menu below the screen, then next step.



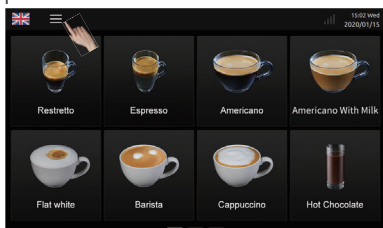
Step 3: Follow the on-screen instructions to perform the final rinse.



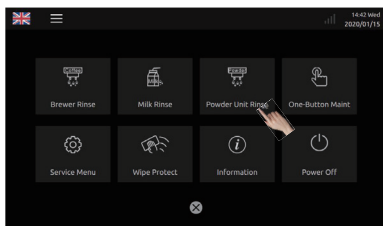
The quick rinse of the milk frother is completed, back to the main page automatically.

## 8.2.3 Flushing the Instant spout

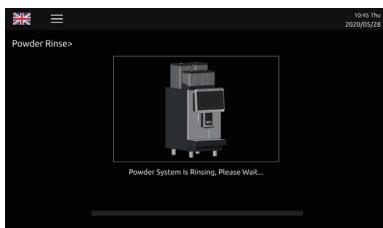
**Step 1:** Press the icon and shortcut at the top of the screen and then press the menu.



**Step 2:** In the menu below the screen, press the „Rinse Mixer“ option and then press „Next Step“.



**Step 3:** Follow the instructions, rinse the mixer.

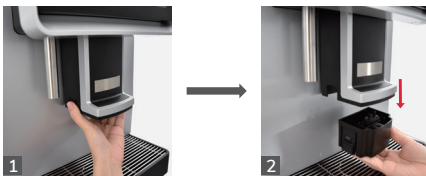


The rinse of the mixer unit is completed, automatically back to the main page.

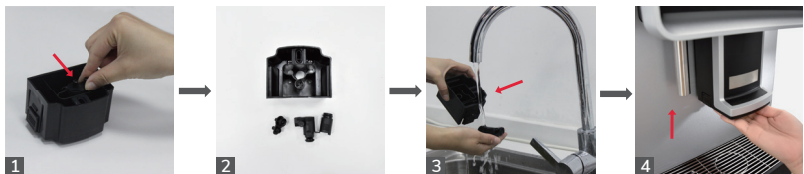
## 8 CLEANING

### 8.2.4 Cleaning the beverage outlet

**Step 1:** Grasp the button on both sides of the beverage spout with your fingers, pull it down and take out the beverage spout.



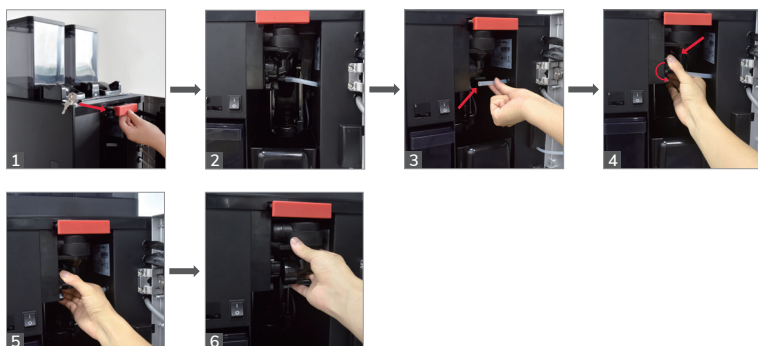
**Step 2:** Pull the connector and the silicone part out of the beverage spout and clean the parts with water, then reinstall it.



Cleaning of the beverage outlet completed.

## 8.2.5 Cleaning the mixing bowl

Step 1: Pull the mixing bowl and the hose out of the beverage spout.



Step 2: Remove the cover of the mixer device, remove the mixing bowl and clean it with water.

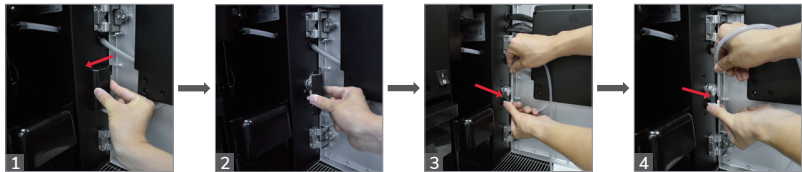


The mixing bowl was removed and cleaned.

## 8 CLEANING

### 8.2.6 Disassembling and cleaning the milk hose line

**Step 1:** Remove the lid of the pinch valve according to the direction of the arrow, disconnect the blue milk hose and clean it.



**Step 2:** Connect the hose for clean milk.



Cleaning of the milk hose is complete.

## 8.3 MAINTENANCE

The maintenance item may only be operated by qualified personnel.

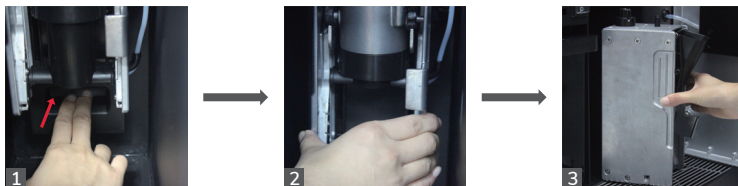
### 8.3.1 Cleaning the brewing system

#### 8.3.1.1 Steps for removing the brewer

Step 1: Open the door, take out the set container.



Step 2: Press on the holder and then on the frame. Take out the brewing system.



Removal of the brewing system completed.

## 8.3 MAINTENANCE

### 8.3.1.2 Assembly of the brewing system

Step 1: Place the brewing system on the frame.



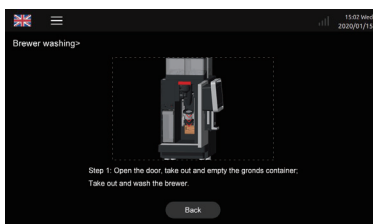
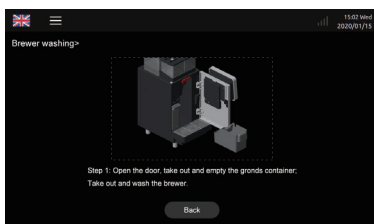
Step 2: Take the frame and pull the brewing system to the correct position.  
Replace the container for the grounds container.



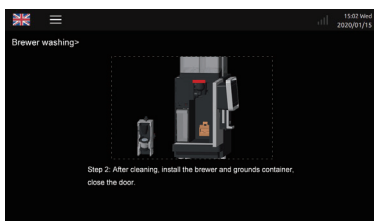
The brewer is installed.

### 8.3.1 3 Cleaning the brewer

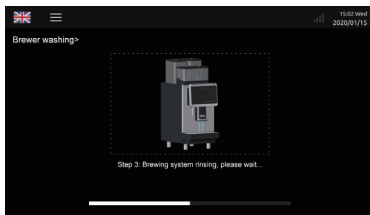
**Step 1:** Open the door, take out the grounds container and empty it; take out the brewer and clean it.



**Step 2:** After cleaning, install the brewer and grounds container and close the door.



**Step 3:** Brewing system rinsing, please wait.

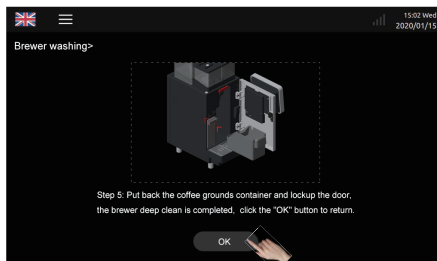


## 8.3 MAINTENANCE

**Step 4:** Please open the door, take out the coffee grounds container and empty it.



**Step 5:** Reinstall the coffee grounds container and lock the door, the brewing process is complete. Click on the „OK“ button to return.



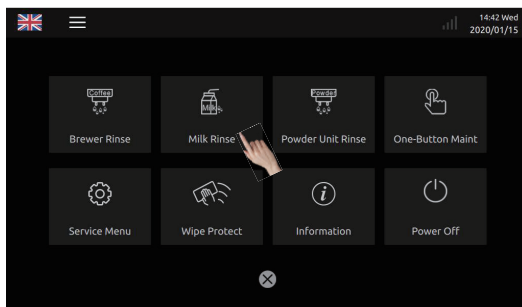
The cleaning of the brewer is finished, back to the start page.

### 8.3.2 Thorough cleaning of the brewer

**Step 1:** Press the icon and the shortcut at the top of the screen, then press the menu.



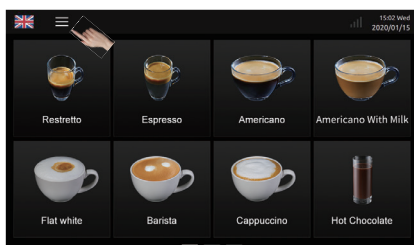
**Step 2:** Press „Rinse brewer“ for more than 3 seconds  
Follow the instructions on the user interface.



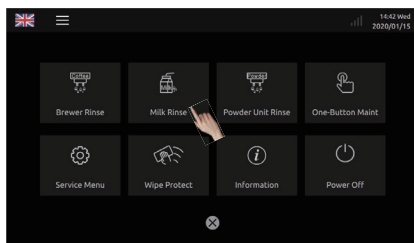
## 8.3 MAINTENANCE

### 8.3.3 Thorough milk cleaning

Step 1: Press the icon and shortcut at the top of the screen and then press the menu.



Step 2: Press „milk rinse“ for more than 3 seconds to perform a thorough milk cleaning. Follow the prompts on the user interface.

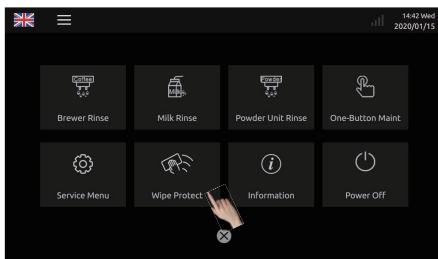


### 8.3.4 Descaling

Step 1: Click on the icon and shortcut at the top of the screen and then on the menu.



**Step 2:** Press „Wipe Protection“ for more than 3 seconds to perform the descaling process cleanly. Follow the prompts on the interface.

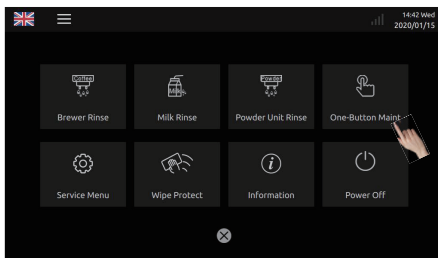


### 8.3.5 One-Touch Maintenance

**Step 1:** Press the icon and shortcut at the top of the screen and then press the menu.



**Step 2:** Follow the instructions, press the „ One-Touch Maintenance „ button.



## 9 RESPONSIBILITY AND WARRANTY

### 9.1 User's responsibility

- Repair and maintenance work is only permitted to be carried out by customer services or by personnel authorized by the distributor.
- All these measures are only permitted to be carried out by customer services or by personnel authorized by the distributor.

### 9.2 Warranty and compensation

- Any physical injury or loss of property caused by the following reasons, our company shall not be liable to compensate for the loss.
  - Not operating with regulations.
  - Improper installation, testing, operation, cleaning, maintenance and device option.
  - Not observe the maintenance period interval.
  - Operation machine under the safety device damage, improper installation or failure.
  - Without observing the regulations referenced about machine saving, installation, operation and maintenance.
  - Not using the machine in normal condition. Improper reparation.
  - Only recommended original spare parts.
  - Damaged caused by foreign matter, accident, human and other beyond human control.
  - Insert foreign matter into machine or open the cover by foreign matter.

## 10 ATTENTION

### 10.1 Daily using and maintenance attention

- Do not add water to the bean and Instant container.
- Do not open the door when the appliance is running, do not remove the grounds container, drip tray, water tank and other spare parts.
- The water tank is only intended for cold and clean water, hot water and ice water is not allowed.
- Recommended are half roasted beans and beans with a lower oil content. Highly oily beans and burnt beans are not recommended.
- Beware of burns. Do not touch the outlet while the drink is being prepared.
- Brushes and cleaning agents not recommended by coffee perfect are not permitted. If the machine is dirty, please clean the machine with a soft cloth and coffee perfect machine cleaner.
- Water and Instant must be below the MAX filling line. If there is no MAX filling line, please fill the water and Instant containers to approx. 80%.
- Do not switch off the appliance during beverage preparation, self-tests and automatic cleaning.

**coffee perfect GmbH | Deutschland**

Melden Sie sich bei unserem  
Solution Center – kostenfrei  
unter: +49 (0) 541 76013 - 0

Service-Fax  
+49 (0) 541 76013 - 499

Netter Platz 1  
49090 Osnabrück  
info@coffee-perfect.de  
www.coffee-perfect.de

**coffee perfect | Österreich  
is a member of CP Austria GmbH**

Melden Sie sich bei unserem  
Solution Center – kostenfrei unter:  
+43 (0) 512 214 - 081

Service-Fax  
+43 (0) 512 214 - 082

Grabenweg 67 b  
6020 Innsbruck  
info@coffee-perfect.at  
www.coffee-perfect.at

**coffee perfect | Denmark  
is a member of CP Denmark A/S**

Please contact us for free:  
+45 787 93 108

Service-Fax  
+45 787 93 144

Birk Centerpark 40  
7400 Herning  
info@coffee-perfect.dk  
www.coffee-perfect.dk